



NEWSLETTER

Georgia State Poetry Society, Inc.

Founded August 30, 1979 Incorporated June 11, 1981 Atlanta, Georgia
Member, National Federation of State Poetry Societies, Inc.
Affiliate, The Academy of American Poets

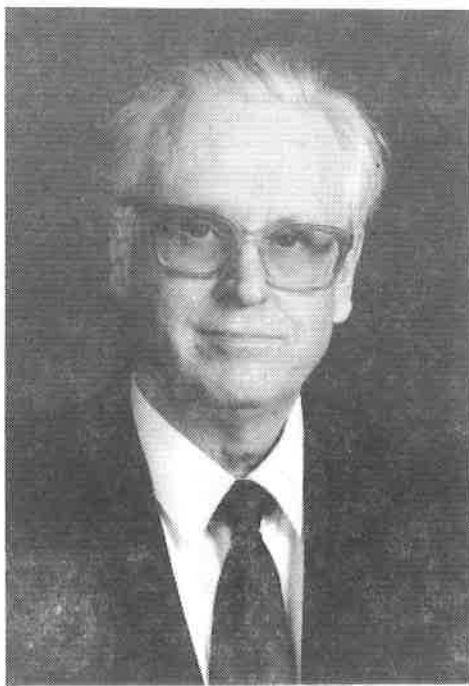


Volume 12, Number 2

Ethelene Dyer Jones, Editor
P. O. Box 120, Epworth, Georgia 30541

January, 1991

DR. TED R. SPIVA TO SPEAK on "THE REDISCOVERY OF MYTH"



"The Rediscovery of Myth: Poetic Influences of Joseph Campbell and C. G. Jung" will be the topic of the address delivered on January 19 to the quarterly meeting of the Georgia State Poetry Society by Dr. Ted R. Spivey.

From 1956 until his retirement in June, 1989, Dr. Ted R. Spivey was a professor of English at Georgia State University, Atlanta. He received his A. B. degree at Emory University and his M. A. and Ph. D. degrees from the University of Minnesota, where he taught two years. He is married to the former Julie Douglass and they have two children.

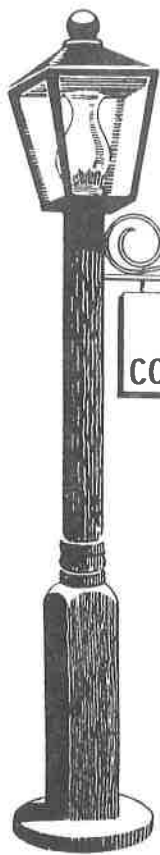
Dr. Spivey has published more than seventy-five poems, articles and stories, as well as

WINTER QUARTER MEETING JANUARY 19 at LENBROOK in ATLANTA

Note: Advance reservations for luncheon a must. Call Emily Vail, 404-961-5653 no later than noon Wednesday, January 16 if you plan to eat lunch (\$9.00 per person) at Lenbrook.

Registration and Coffee	9:30 AM
Call to Order	10:00 AM
Recognitions, Announcements	
Members' Readings	10:15 AM
led by Herbert Walter Denmark	
Announcement of Chapbook Winner	11:00 AM
led by Bettie Sellers, Chairman	
Contests and Awards	11:20 AM
led by Marthalou Hunter	
Members' Book Reviews	11:40 AM
led by Virginia Cole Veal	
Luncheon	12:00 Noon
Address: "The Rediscovery of Myth"	1:00 PM
Dr. Ted R. Spivey	
Business, Announcements	
Adjournment	2:00 PM

ten books, five of which are about the relationship between myth and literature. His most recently published critical study, Beyond Modernism (1988), examines fourteen British and American authors in the light of the mythological studies of Joseph Campbell, Mircea Eliade, and C. G. Jung. He is also the author of a poetic trilogy entitled The City from the Sea, two volumes of which, To Die in Atlanta and A City Observed, are already in print. Volume 3 entitled Airport: America Rediscovered is due for publication in the spring of 1991. His most recent book is Conrad Aiken: A Priest of Consciousness (with Arthur Waterman) published in 1990 by AMS.



Ethelene Dyer Jones....President
 Dr. Edward DeZurko..V. President
 Nancy Klotz.....Secretary
 John K. Ottley, Jr.....Treasurer

**OFFICERS
 and
 COMMITTEES**

Marthalou Hunter..
 ..General Contests
 Chairman
 Virginia Cole Veal
 ...Byron Herbert
 Reece International
 Awards

Bill Davenport...
 ...Edward Davin Vickers Interna-
 tional Awards

Ellen Dugan.....Youth Awards
 Julia Evatt Robinson.....News-
 Contest Awards

JoAnn Yeager Adkins.....Editor

Reach of Song

Virginia Cole Veal Members'
 Book Reviews

Herbert Walter Denmark ...
 Members' Readings

Jeanne Shaw.....Strophes
 Reporter

Riherd and Edna Greene ...
 Mailings

Patricia Zeller.....Membership Chair
 Dr. E. Jerome Zeller.....Librarian
 Riherd GreeneHistorian
 Emily VailReservations
 Betty Gore.....Hospitality
 Dr. Edward DeZurkoPrograms Chairman
 Bettie Sellers.....Programs
 Dorothy Williamson Worth.....Programs
 Bill Davenport.....Programs
 Dr. Frank McKemie.....Immediate Past President

The Newsletter of the Georgia State Poetry
 Society, Inc. is published quarterly. Address
 all correspondence and inquiries to
 Ethelene Dyer Jones, Editor
 P. O. Box 120
 Epworth, Georgia 30541
 (404) 492-3309

Newsletter information deadlines:
 by February 29 for Spring issue
 by May 30 for Summer issue
 by August 30 for Fall issue
 by November 30 for Winter issue

This newsletter is supported in part by the
 Georgia Council for the Arts through an approp-
 riation from the General Assembly and the Nat-
 ional Endowment for the Arts.

VIEWPOINTS and VISIONS

by Ethelene Dyer Jones

As this newsletter goes to press, we are
 in the midst of the Christmas season. When
 you receive the newsletter, the New Year will
 have dawned, bringing us inimitable challenges
 and opportunitites, fears and trepidations, but
 always hope. May 1991 be filled with
 creative activity as you think and write and
 make a difference with your poetic endeavors.
 My wish for each of you is good health, warm
 friendships, productive thinking and rewarded
 creativity.

In retrospect, the October meeting at
 lovely Lenbrook delighted us, both in
 atmosphere and shared fellowship, and timely
 speaker. Sue Scalf of Prattville, Alabama,
 noted that poetry should always involve the
 reader. As she shared from her most recent
 book, Ceremony of Names, she crowned our
 day with a poetic journey from the Kentucky
 coal fields to Southern porches, in
 recollections of ancestors whose whispers
 influence us still, and to the innocence of
 times before the snake's seductive hiss. Her
 allusions took us to the River Styx and to the
 lakes and woods that bespoke Walden's
 seclusion. These were interspersed with what
 she called "the joy of the commonplace," such
 as making cornbread in an iron skillet and
 remembrances of having pound cake and
 coffee on a porch flanked by trumpet vine
 and maple trees' shade, where, in tribute to
 her grandmother, she penned, "I hold you
 warm/ like the cup in my hand." Sue Scalf
 declared, "A poem should show before
 telling." She both showed and told in clear
 poetic images. Her address made us proud of
 another notable Southern poet and was a fine
 way for the Society to celebrate National
 Poetry Day.

One cloud surrounded the day at
 Lenbrook. About fifteen had not made
 necessary advance reservations. And although
 we are very proud to have any members and
 guests attend quarterly meetings, the extra
 number without advance notice put a hardship
 on Mrs. Holmes, food services manager. She
 came through in a glowing way, but **please**, in
 future, make advance reservations with Emily
 Vail so we can give the number expected for
 the luncheon.

I am looking forward to the January 12
 Board of Directors' meeting and the January
 19 quarterly meeting with Dr. Ted R. Spivey
 as speaker. The "Night of Poetry at
 Callandwolde" on **February 11** is an exciting
 activity. Happy new year to you.

RESERVATIONS FOR JANUARY 19 MEETING

Please call our reservations chairman by noon on Wednesday, January 16, 1991 to reserve your space at the luncheon at Lenbrook on January 19. Some problems arose in the October meeting because of discrepancies in numbers of reservations. Cost of the lunch is \$9.00. If you pre-reserve and cannot attend, and do not cancel by noon, January 16, you are still responsible for the cost of the meal.

It is difficult to prepare for a luncheon when numbers vary from reservations. Please cooperate in this effort to know in advance how many we can expect at the meeting. We certainly want all of you to come, but we also, of necessity, must know ahead of time so that adequate preparation can be made.

Contact for reservations:
Emily Blake Vail
6426 Woodstone Terrace
Morrow, Georgia 30260
404-961-5653

Please leave your message on Emily's answering machine if she is not at home when you call.

Thank you for your cooperation so that we can avoid embarrassment and confusion.

TRAVEL DIRECTIONS TO LENBROOK

Lenbrook is a high-rise retirement home located at **3747 Peachtree Road, NE**. Going north on Peachtree Road, after passing Lenox Square, **Lenbrook** is on the right. Drive through to the back where there is plenty of guest parking. Take the elevator to the "Lobby Level" and proceed through the door and the solarium to the information desk. The meeting area entrance is down the hall from to the left of the desk.

Marta buses stop at Lenbrook, so if any persons need to ride Marta, it is a convenient stop.

It is a comfortable and beautiful location for our meeting, and the managers have been gracious in arranging for our needs. Please come and share in a delightful quarterly meeting.



"Images are a way of decorating poems. I do not mean using images to decorate poetry. I mean images as icons. Images as the structure, the bones, gleaming behind the flesh." -Diane Wakoski in Toward a New Poetry.



FRONT and CENTER

by Pat Zeller
Membership Chair

A hearty welcome to new members!

Homemaker and part-time movie checker **Anne Davenport** is from Passaic, New Jersey. She loves to write poetry and has published a few poems in small publications. She also enjoys her forty plants, three dogs and two finches.

Pawnbroker **Terai Hankins** lives in Jonesboro, Georgia with her husband and three children. Her interests include writing, music, judo, and family history. She has published in American Poetry Anthology, Southern Poetry Association, Clayton County Bar Association Newsletters, and National Arts Association publications. She has a chapbook of fifty poems which Southern Poetry Association published.

David Hawkins lives in St. Peters, Missouri, but was originally from Summerville, Georgia. He visits his parents there often. Recently, Southern Poetry Association published one of David's poems.

Clayton's park policeman is a part-time clown and a new member of GSPS. **Francis Kane** ran away from home when he was twelve years old and joined a circus. Now he is a professional clown who wants to make people laugh, to bring more happiness into the world. Francis is retired from a military career of 27 years. He has written short stories and newspaper stories and published a book of poems in 1990.

Kathe Swint of Decatur is a retired librarian for the Georgia Department of Education. She has worked in the libraries of Agnes Scott College, the City of Decatur schools, and Fulton and Gwinnett County schools. She taught high school in Seminole County. Kathe is a member of Oakhurst Baptist Church where she organized the library.

New member **Anita Waide** hopes that GSPS "will help provide an outlet for some of my very talented ...students." Anita

FRONT and CENTER (Cont'd.)

teaches gifted students, ages 7-14, in Bartow County and Adairsville. She lives in Marietta.

Ben Willingham, Sr., is a retired registered electrical engineer who enjoys teaching and calling western folk and square dances. In 1969, Ben was the leading Georgia toastmaster and speaker and in 1951, he won the Civil Defense Communications first prize.

MEMBERSHIP NOTICE

November 15 was the final date for renewal in order to appear on the membership list which is sent to the National Federation of State Poetry Societies each year. If you have not renewed in GSPS, we are still hoping you will do so, even though you will not be a member of NFSPS for the current year. New members continue to be welcome.

GSPS NEWSLETTER POETRY AWARD

by Julia Evatt Robinson, Chairman

Congratulations to Margery V. Carlson of Snellville, Georgia whose poem, "Night Hike," has placed first in this quarter's contest.

NIGHT HIKE

by Margery V. Carlson

Eighteen young city ladies,
Camping Girl Scouts,
Soft-shoed through the cabin door
Into a star-filled California night -
Eyes and ears alert but only nature was
to speak.

The purpose was explained -
To listen, look, and learn - and love
the night.

They stood a moment, nervous giggles hushed,
Until deepest night became their moonlit
wonderland.

Each group moved forward silently,
Awestruck by an experience before unknown.
Fears of darkness, imagined dangers,
Disappeared
As friends linked warm and trembling hands
And softly followed me, their leader.

Eighteen young faces turned, looked up,
looked down, around,
Toward a hooting owl, a wary, chirring bird,

A mouse rustling through crumbling leaves,
a shooting star.
They crouched with me on hard adobe
To see a dozen scurrying beetles at our feet,
Pebbles gleaming in the moonlight
And tiny flowers tucked among the leaves
and grass.

The silence was no longer silent
As newly-receptive ears
Heard croaking frogs chorusing with a
cricket orchestra
And gently exploring hands felt the earth
And let an ant climb up a human hill.

Creaking pines sent down their pungent scent
In prickly needles drifting to the ground
And wisps of clouds sped past the moon.
A rising breeze brushed curls
And ponytails
And nearby leaves
As raindrops gently kissed the upturned faces.

The wonders of this night
Would be a part, forever,
Of eighteen city girls
And one adult.

A NIGHT OF POETRY AT CALLANWOLDE February 11, 1991

Mark your calendar and plan to attend the GSPS-sponsored "Night of Poetry at Callanwolde" scheduled for Monday, February 11, 1991, beginning at 8:15 P. M. Admission is \$2.00 for adults and \$1.00 for students (with identification).

The readings will honor founding president, Edward Davin Vickers. Members of GSPS who have signed to read are as follows: Ethelene Dyer Jones, Herbert Walter Denmark, Helen Harris Carnes, Frank W. McKemie, Virginia C. Veal, Irma Dowis-Edwards, Carole Fessenden, Pat Morton Posey, Emily Blake Vail, Betty Gore, Memye Curtis Tucker, Dorothy Williamson Worth and Jeanne Osborne Shaw. Other members desiring to read should contact Ethelene Dyer Jones at P. O. Box 120, Epworth, Georgia 30541, telephone 404-492-3309 immediately.

QUOTATION WORTH PONDERING:



What you want to
do, you do.
The rest is just
talk.

-John Cleek

WINNERS IN FALL, 1990, CONTEST

by Marthalou Hunter, Contest Chair

The Charles and Virginia Dickson Awards:

Sponsored by William L. Davenport, member GSPS; Judge: Dr. Glenn E. Swetman, Thibodeaux, Louisiana

First - "At the Radiation Clinic" - Jeanne Osborne Shaw, Decatur, Georgia

Second - "All Motion Is Relative" - Donna Jones, Statesboro, Georgia

Third - "Like the Gleaming Lantern's Light" - June Owens, Zephyrhills, Florida

Honorable Mentions:

1st - "Stretching Back from Silence" - Mildred Barthel, Mt. Vernon, Iowa

2nd - "The Forgetting Place" - Jeanne Osborne Shaw, Decatur, Georgia

3rd - "The Sadness of Sun" - Archie Buie, Cleveland, Georgia

4th - "Return to Greece" - Dorothy Williamson Worth, Decatur, Georgia

5th - "Sore Loser" - Archie Buie, Cleveland

6th - "The Loquat Tree" - Margery V. Carlson, Snellville, Georgia

7th - "Picayune" - Jane W. Johnson, Norcross, Georgia

ACHIEVEMENTS OF MEMBERS



Charles B. Dickson received two firsts, two seconds and two thirds in 1990 awards of the Florida State Poets Association. He won the Harold G. Henderson Award of the Haiku Society of America, an annual competition drawing entries from all over the English-speaking world. He had poetry accepted by the Alchemist (Canada), Voices International, Tandava, Anthology of Eight of the Florida State Poetry Association.

Dr. Edward De Zurko was awarded the 1990 Leitch Memorial Prize and \$50 for his poem, "Widower's Walk." Leslie Mellichamp, editor of The Lyric, Blacksburg, Virginia, states that the prize was made possible by a bequest of Mary Sinton Leitch, one of the founders of the Lyric, and is offered in cooperation with the Poetry Society of Virginia. The winners were chosen from among those poets whose work was published in the 1990 issues of the Lyric. The judge was Arthur F. Stocker,

Professor of Classics Emeritus of the University of Virginia.

Mary Ann Coleman has had poems accepted in Lullwater Review, English Journal, and The Blue Plate Special. She won an honorable mention in the international Sri Chimnoy contest for a spiritual poem. (The seven winning poems have been put on display and are anthologized in New York.) She taught a six-weeks poetry workshop at the University of Georgia's Center for Continuing Education. She gave readings at Whit Davis Elementary School and the Athens Regional Library.

Denver Stull has recently had acceptances from The Alchemist, The Advocate, Cicada, Brussell Sprouts and has a book of haiku in progress.

Bettie M. Sellers' film, "The Bitter Berry," was chosen by the National Endowment for the Humanities as one of three projects in the nation to be showcased at the National Council of Teachers of English Conference in November in Atlanta. She has poems and essays forthcoming in Appalachian Heritage and Lullwater Review. The Chattahoochee Review has published another of her essays, "There Was Always the Looking." She has spoken and read poems this fall in a literary seminar at Emory University, at the Retired Teachers of Towns County, at the 14th District P. T. A. near Roswell, and at the Georgia Writers Series at Wesleyan College in Macon. On October 23, 1990, she was named Poet of the Year for her book Wild Ginger at a ceremony in the Governor's office. The award was given by The Council of Authors and Journalists.

GSPS Treasurer, **John K. Ottley, Jr.**, has a chapbook, That Nature Might Stand Up published in 1990.

Ethelene Dyer Jones has an article on poet Byron Herbert Reece in the Winter, 1990-91 North Georgia Journal. She writes "Through This Window," a weekly column for The News-Observer and "Mountain Musings," a weekly column for The Mountain Journal. She spoke in November to the McCaysville Garden Club using original slides to illustrate from her poems on the theme, "A Garden for the Heart and Spirit." Her book, Facets of Fannin: A History of Fannin County, Georgia is now in its third printing. A book review of Reach of Song: A Book of the Tenth Year written by her appeared in the Fall, 1990 Georgia Librarian.



Georgia State Poetry Society, Inc.

Founded August 30, 1979 Incorporated June 11, 1981 Atlanta, Georgia
Member, National Federation of State Poetry Societies, Inc.
Affiliate, The Academy of American Poets

THE BYRON HERBERT REECE INTERNATIONAL POETRY AWARDS

The Georgia State Poetry Society, Inc. announces its sponsorship of the second annual international poetry awards in honor of the late Georgia poet, Byron Herbert Reece. Reece, who lived from 1917 through 1958 in his beloved North Georgia mountains, became famous for his lyrical poetry about nature, the human spirit and the passage of time.

PRIZES: *First: \$250.00; - Second: \$100.00; -Third: \$50.00;
Fourth: \$25.00; -Fifth: \$15.00; -Sixth: \$10.00.*

ELIGIBILITY: *Open to all except last year's winners who are ineligible for one year.*

SUBJECT: *Any*

FORM: *Any*

LENGTH: *Maximum of 50 lines; no minimum.*

ENTRY FEES: *\$5.00 (U. S.) for the first poem; \$1.00 (U. S.) for each additional poem.*

DEADLINE: *Entries must be received by January 31, 1991.*

GENERAL: *Poems must be written in English and typed on standard 8½ x 11" paper. Submit two copies of each entry with name of contest on both copies, poet's name and address on one copy. Poems must be original, unpublished and not submitted in any other contest or for publication elsewhere. Poems also must not have won any cash award in an earlier Georgia State Poetry Society contest. Winners will be announced at the Society's meeting in April, 1991, and, if not present, will be notified by mail. No entries will be returned. For a list of winners, enclose a stamped, self-addressed envelope with entries. The Georgia State Poetry Society reserves the right to publish winning poems. However, all other publishing rights remain with the author.*

ENTRIES TO: *Virginia C. Veal, Chairman
Reece International Poetry Awards
2233 Drew Valley Road, N. E.
Atlanta, Georgia 30319*



Georgia State Poetry Society, Inc.

Founded August 30, 1979 Incorporated June 11, 1981 Atlanta, Georgia

Member, National Federation of State Poetry Societies, Inc.

Affiliate, The Academy of American Poets

THE EDWARD DAVIN VICKERS MEMORIAL POETRY AWARD

Georgia State Poetry Society announces a poetry competition in honor of Founding President Edward Davin Vickers. Mr. Vickers died on April 17, 1990, and the Society gratefully acknowledges the numerous memorial contributions. The money will be set up as a permanent endowment, the income from which will help fund an annual contest. The first prize this first year is provided by Dr. and Mrs. Tom Gable of Atlanta, Georgia.

- PRIZE:** First Prize: \$250.00; Second Prize: \$100.00; Third Prize: \$50.00. Prizes will not be split, and there will be no honorable mentions. No contestant will be awarded more than one prize.
- ELIGIBILITY:** Open to all.
- SUBJECT and FORM:** Any.
- LENGTH:** Maximum of 80 lines; no minimum.
- ENTRY FEES:** \$5.00 for the first poem; \$1.00 for each additional poem. Make checks payable to Georgia State Poetry Society.
- DEADLINE:** Entries must be postmarked by April 30, 1991.
- GENERAL:** Poems must be typed on standard 8-1/2 x 11 paper. Submit two copies of each entry with name of contest on both copies, poet's name and address on only one copy. Poems must be original, unpublished, and not submitted in any other contest or for publication elsewhere. Poems may not have won any award other than "honorable mention" in any previous Georgia State Poetry Society poetry contest.
- PUBLICATION:** G.S.P.S. reserves the right to publish winning poems. Poet retains all other rights.
- ANNOUNCEMENT:** Winner will be announced at the Society's August, 1991 meeting. If winner is not present, notification will be made by mail. No entries will be returned.
- WINNERS LIST:** For a list of winners, please enclose a self-addressed stamped envelope with entries.
- ENTRIES TO:** William L. Davenport, Chairman
EDWARD DAVIN VICKERS MEMORIAL POETRY AWARD
P. O. Box 225
Big Canoe, Georgia 30143.



Georgia State Poetry Society, Inc.

Founded August 30, 1979 Incorporated June 11, 1981 Atlanta, Georgia

Member, National Federation of State Poetry Societies, Inc.

Affiliate, The Academy of American Poets

GENERAL RULES FOR GEORGIA STATE POETRY SOCIETY CONTESTS

1. Any poem entered in any contest held by the Georgia State Poetry Society, Inc. must be the original work of the writer. It must be unpublished and may not be currently submitted for publication nor entered in any other contest. A poem submitted may not have won any award other than honorable mention in any previous GSPS Contest.
2. Poems must be written in English. Each poem must be typed single-spaced (double spaced acceptable) on one side of a sheet of 8½" x 11" paper. Two copies must be submitted. The name of the contest must appear on the upper right hand corner of **both** copies. Under the name of the contest on **one copy only** type your name and address.
3. The GSPS reserves the right to publish prize-winning poems in its annual anthology, The Reach of Song. The poet retains all other rights. No poem will be returned. Copies of non-winning poems will be destroyed.
4. Any contest receiving fewer than ten entries may be cancelled by GSPS.
5. Winners of contests will be announced at the meeting of GSPS following the contest deadline. Winners not present will be notified by mail.
6. Those wishing to have a list of winners must send a SASE (Self Addressed Stamped Envelope). All inquiries must be accompanied by a SASE.
7. Qualified judges who are not members of GSPS will be secured. Judges will be announced on the list of winners.
8. Anyone who wins a cash prize in any of the Society's continuing annual competitions will be ineligible to compete in that contest the following year.
9. No contestant may win more than one award in any individual contest. If a contestant is a multi-winner, then he/she will receive only the highest prize. The judges will be directed to choose alternates to be used when this situation arises.
10. Make checks for entry fees payable to Georgia State Poetry Society, Inc. Send entries (except for the Newsletter contest and other specified contests) to:

Marthalou Hunter
GSPS Contest Chairman
303 Vickers Drive NE
Atlanta, Georgia 30307



Georgia State Poetry Society, Inc.

Founded August 30, 1979 Incorporated June 11, 1981 Atlanta, Georgia
Member, National Federation of State Poetry Societies, Inc.
Affiliate, The Academy of American Poets

ANNOUNCING SPRING, 1991, GSPS CONTESTS

MAREL BROWN AWARDS

The Marel Brown Awards, sponsored by member Betty Gore, honors her friend, beloved poet and GSPS member, Marel Brown.

Form: Lyric. **Subject:** Any. **Line Limit:** Thirty.

Eligibility: Open to all. **Fees:** One free entry to members. \$1.00 per poem for additional entries by members and for all poems entered by nonmembers.

Deadline: Poems to reach contest chairman by March 1, 1991.

Prizes: First, \$25; Second, \$15; Third, \$10. Honorable mentions at discretion of judge.

MELISSA MARIE HENRY AWARDS

Sponsored by member Georgia Henry, this contest honors her granddaughter, Melissa Marie Henry.

Prizes: First, \$25; Second, \$15; Third, \$10; Honorable Mentions at discretion of judge.

Form: Any. **Line limit:** None set. **Subject:** Mental or physical disability.

Eligibility: GSPS members, no fee; non-members, \$2.00 per poem. **Limit:** Two poems.

Deadline: Poems to be in hands of contest chairman by March 1, 1991.

Mail entries for the contests listed above to:

Marthalou Hunter
GSPS Contests Chairman
303 Vickers Drive, NE
Atlanta, Georgia 30307

GSPS NEWSLETTER POETRY CONTEST

Eligibility: For members only. **Fees:** \$1.00 handling, per poem.

Subject, Form: Any, within good taste. The best of each quarter's poems entered will be published. At the end of the year, currently with the summer quarter's poems, members vote, according to their judgment, on "the best of the year" by sending vote on those that have appeared quarterly in the newsletter to the GSPS Newsletter Poetry Contest Chairman.

Deadlines: February 14, 1991, Spring Contest; May 16, 1991, Summer Contest; August 16, 1991, Fall Contest; and November 16, 1991, Winter Contest.

Mail Entries, Vote and Handling Fees to:

Julia Evatt Robinson
GSPS Newsletter Poetry Contest
P. O. Box 751
Ellijay, Georgia 30540



Georgia State Poetry Society, Inc.

Founded August 30, 1979 Incorporated June 11, 1981 Atlanta, Georgia

Member, National Federation of State Poetry Societies, Inc.

Affiliate, The Academy of American Poets

MEMBERSHIP FORM FOR NEW MEMBER

Membership in Georgia State Poetry Society, Inc. is \$15.00 per year (\$25.00 per family) paid annually. The membership year is from July 1 through June 30. Some benefits of membership are: subscription to the quarterly GSPS newsletter; the privilege of publication of a poem in the "Members' Poetry" section of the annual anthology, The Reach of Song; automatic membership in the National Federation of State Poetry Societies, Inc. (NFSPS) and receipt of Strophes newsletter; membership in the Academy of American Poets; quarterly Society meetings at which members read original poems and hear an outstanding speaker; occasional poetry-writing workshops and poetic events; and information on all Society-sponsored poetry contests, several of which have no entry fees for members.

Make membership check payable to Georgia State Poetry Society, Inc. and mail check and this form to:

Patricia Zeller
Membership Chair, GSPS
404 East Washington Street
Summerville, Georgia 30747

Name _____ Telephone (_____) _____

Address _____

City _____ State _____ Zip _____

Occupation _____

If student, please give Age _____ Grade _____ School _____

Please list publications, prizes, interests and information about yourself (use extra sheet if needed):

FOR GSPS USE

Date Received _____

MEMBERSHIP CATEGORY (Check One)

Amount Received \$ _____

_____ Active

Check _____ Money Order _____

_____ Associate

_____ Youth

SECOND ANNUAL CHAPBOOK WINNER TO BE ANNOUNCED AT WINTER MEETING

The winner of the 1991 GSPS Chapbook Competition will be announced at the January 19 meeting. Bettie M. Sellers, chairman of chapbook competition, will present the award to the GSPS member whose work has been selected.

GSPS publishes three hundred copies of the chapbook. The winner receives 250 of the books as a prize. The remaining books will be for sale by the Society for \$5.00 each.

PROGRESS REPORT ON NEW REACH OF SONG

Jo Arm Yeager Adkins, editor of Reach of Song, 1989-90, announces that all entries are in and the task of proofreading and editing is almost completed. The Society, due to shortness of funds, will, of necessity, have to charge members for this anthology as we did the Reach of Song, Book of the Anniversary Year. The new anthology will contain winning poems from all contests held in the year specified as well as a section of member poems, as in previous years.

YOUTH AWARDS NEWS

Ellen Dugan, Youth Contest Chairman, has mailed information to all schools in Georgia for the 1991 Youth Awards. Prizes will be awarded in categories Elementary (1-4 grade), Middle School (5-8 grade) and High School (9-12 grade).

The top ten poems in grades 6-12 will be entered by Georgia State Poetry Society in the National Federation of State Poetry Societies Youth Awards made possible by the Manningham Trust Fund.

If you know students who pursue an interest in poetry, please encourage them to submit an entry. Submissions must be made from the school student attends, following specific guidelines as given in the October, 1990 GSPS Newsletter and in the information mailed to schools.

1991 WRITING COMPETITION

For details on Fiction for Adults, Fiction for Children, Non-Fiction, Rhymed Poetry and Free Verse Poetry Competitions sponsored by Black Hills Branch of National League of American Pen Women, send SASE to Eileen S. Goggenthen, P. O. Box 692, Keystone, SD 57751. Hurry. Entry deadline is 2/15/91.

REPORT ON AUDIT, GSPS RECORDS

"As members of the committee appointed to conduct the annual audit of the financial records of the Georgia State Poetry Society, Inc., we have inspected the GSPS books and find them in order. We wish to commend the GSPS treasurer, John K. Ottley, Jr., for his diligence and meticulous work." (October 21, 1990) Signed: Virginia Veal, Chairman; Virginia Dickson; Charles Dickson.

Announcing...

Mildred Klyce of Southern Poetry Association invites all Georgia poets to investigate SPA's publishing policy for chapbooks. For details, send a # 10 Self-Addressed, Stamped Envelope (SASE) to Southern Poetry Association, P. O. Box 524, Pass Christian, MS 39571. Publisher of The Poet's Voice, SPA will also send information on contests upon request and SASE.

A. R. T. Station, Inc., P. O. Box 1998, Stone Mountain, Georgia, 30086, 404-469-1105, announces a series of one-day workshops as follows: January 26, 1991, "Exploring Poetry Writing" led by Dorothy Williamson Worth. \$30.

January 12, 1991, "Structuring Your Novel," led by Nancy C. Knight. \$30.

March 9, "Giving Magazine Editors What They Want," led by Regina Grant Hersey. \$20.

April 13, "Where Do I Go with My Writing?" presented by editors and publishers. \$30.

May 11, "Getting Ready to Write," led by Nancy C. Knight. \$30.

Seminars begin at 9:00 A. M. and most continue to 3:00 P. M. Call 469-1105 for more details.

Chiron Review announces its 1991 chapbook contest. Deadline is September 1, 1991. Winner receives 50% of press run of 100-200 copies. Entry is \$4 per manuscript of 32-48 pages. Send complete ms, any subject, any style, no taboos. Last page contains name and address of poet and any acknowledgements of poems previously published. Send SASE for return of ms, and # 10 SASE for winner's name and address. Jane Hathaway, CHIRON REVIEW, Route 2, Box 111, St. John KS 67576. 316-549-3933.

Hazel Mitchell

WHAT IS POETRY?

Poetry is intellect under the glow of emotion. It says more in a dozen words than prose can say in a thousand. It is nearer to the truth than history and holds greater sway over the passions than all the arts. By its magic the desert blossoms with life and a root out of dry ground becomes as Aaron's rod. Through poetry men reach a reality which they would never find through philosophy. The way of poetry is as sure a way to true religion as the path of prayer. The holiest shrine is as reverently approached by poetry as by worship. Prophetic visions which prose can never convey become luminous when set to the "music of language." The far-off whispers of eternity are made vocal to earth in poetry, and the forms of things unknown are bodied forth and given a habitation and a name.

-Marshall Wingfield

(submitted by John K. Ottley, Jr.)

MEMBERSHIP RENEWAL FORM

(For membership renewal, fill out, clip and mail with dues [\$15.00 individual, \$25.00 for family] to:)

Patricia Zeller
GSPS Membership Chairman
404 East Washington Street
Summerville, Georgia 30747

Name _____

Address _____

Amount Enclosed _____ Check ___ M.O. _____

Contribution \$ _____ for _____

(Sponsoring contest, matching grant, other)
Suggestions: _____

I volunteer for _____

Phone number _____

GEORGIA COUNCIL FOR THE

This program is funded in part by this agency through appropriations of the Georgia General Assembly.



Georgia State Poetry Society, Inc.
Newsletter
P. O. Box 120
Epworth, Georgia 30541

Non-Profit Organization
U. S. Postage **PAID**
Permit # 12
Epworth, Georgia 30541

Mrs. Patricia B. Zeller
404 E. Washington St.
Summerville GA 30747